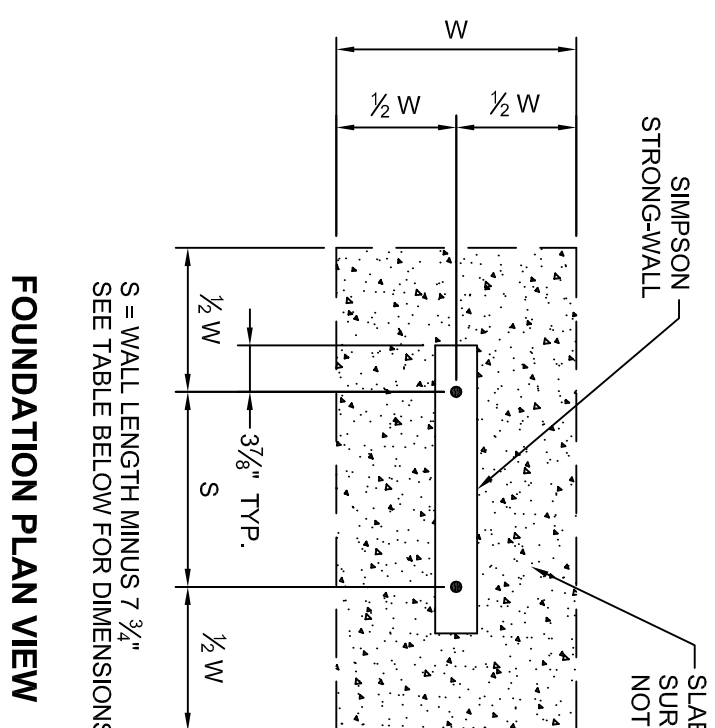


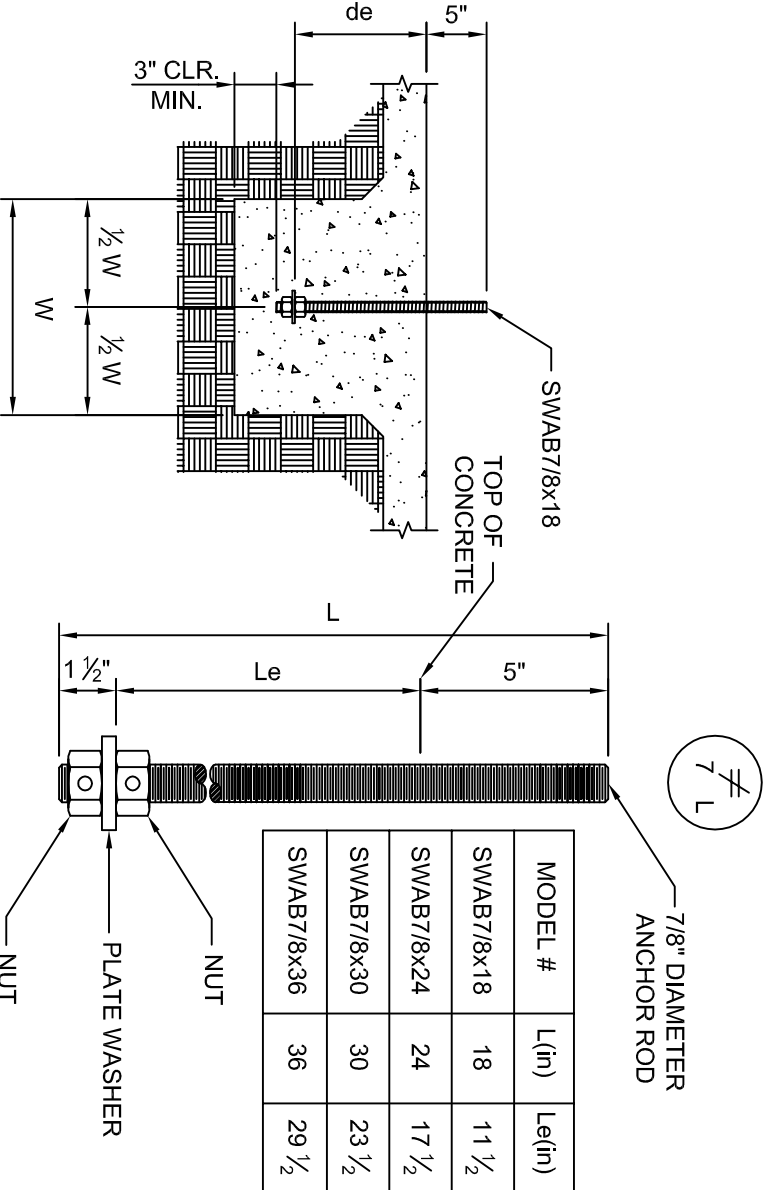
SLAB ON GRADE FOUNDATION CURB OR STEMWALL FOUNDATION

H = 13 1/2" MAXIMUM WITH SWAB7/8x30 ANCHOR BOLT WHEN de = 10"
H = 19 1/2" MAXIMUM WITH SWAB7/8x36 ANCHOR BOLT WHEN de = 10"



FOUNDATION PLAN VIEW

FOUNDATION DIMENSIONS FOR STRONG-WALL ANCHORAGE				
CONDITION	ASD ALLOWABLE UP/LIFT (lbs)	W (ft)	de (ft)	de (in)
CRACKED	13,000	29	10	
UNCRACKED	13,000	21	7	
CRACKED	9,700	16	6	
		21	7	
		25	9	
UNCRACKED	9,600	14	6	
		18	6	
		22	8	



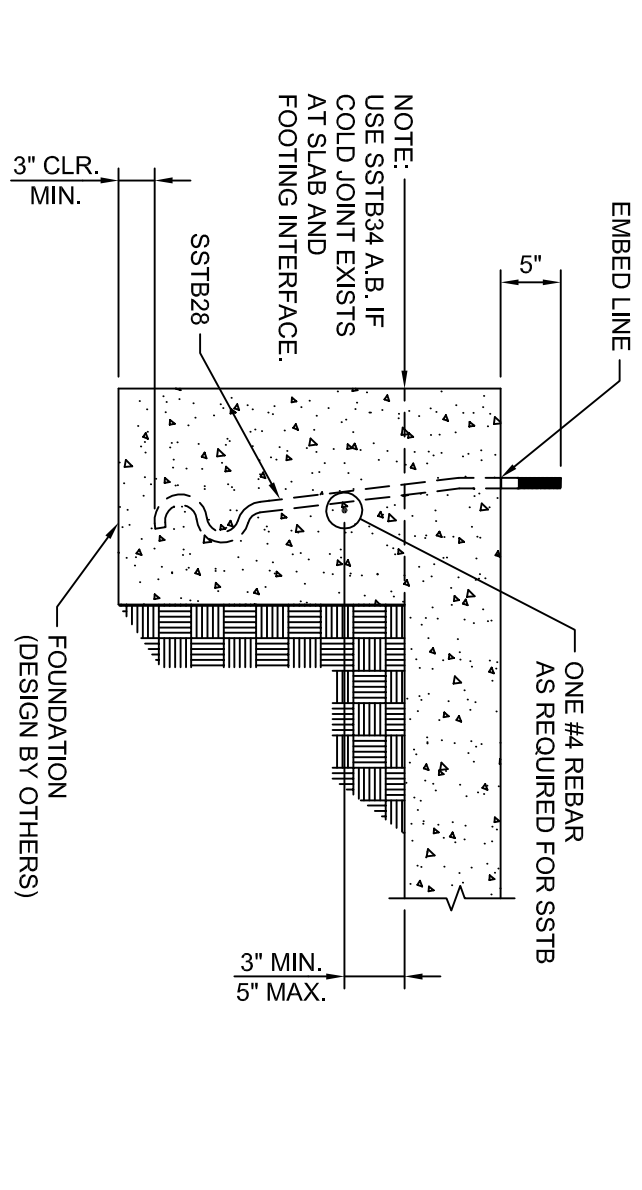
INTERIOR FOUNDATION

NOTES:
1. SEE 2-SW1 FOR DIMENSIONS AND ADDITIONAL NOTES.

ANCHORAGE - TYPICAL SECTIONS

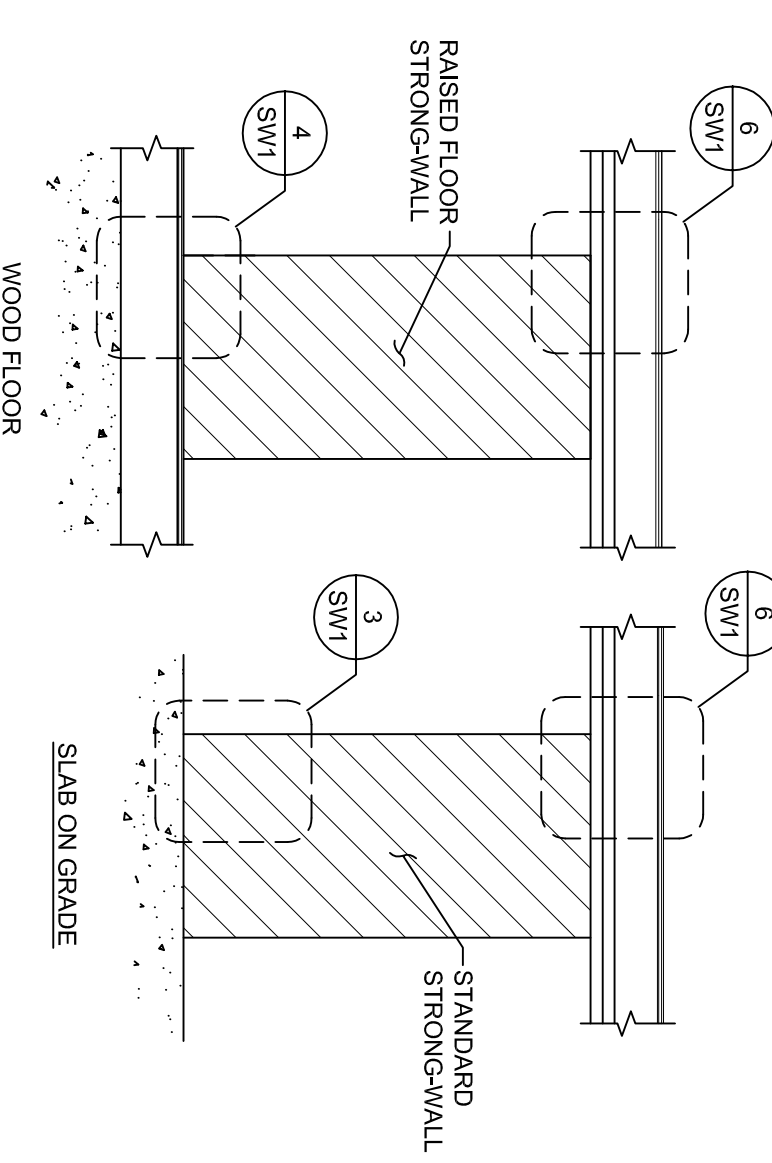
SEE SHEET SW2 FOR STACKED STRONG-WALL REQUIREMENTS.

SSTB ANCHOR BOLTS ARE NOT CURRENTLY CODE LISTED. SEE DETAILS 1-SW1 AND 2-SW1 FOR SWAB7/8 CODE LISTED ANCHORAGE SOLUTIONS. REFER TO THE INSTALLATION AND REBAR LENGTH REQUIREMENTS.



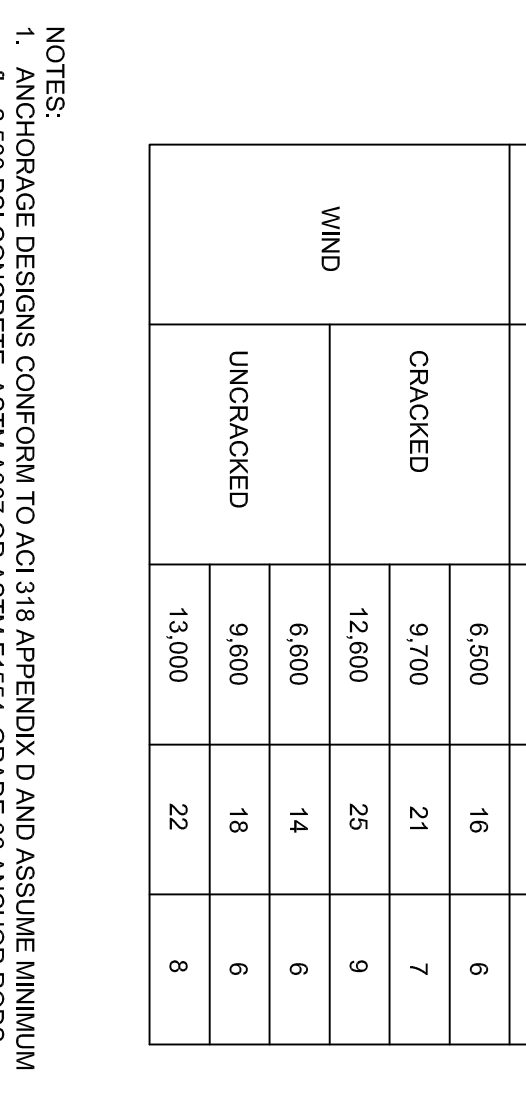
SSTB ANCHORAGE (SLAB ON GRADE)

9



SINGLE STORY STRONG-WALL®

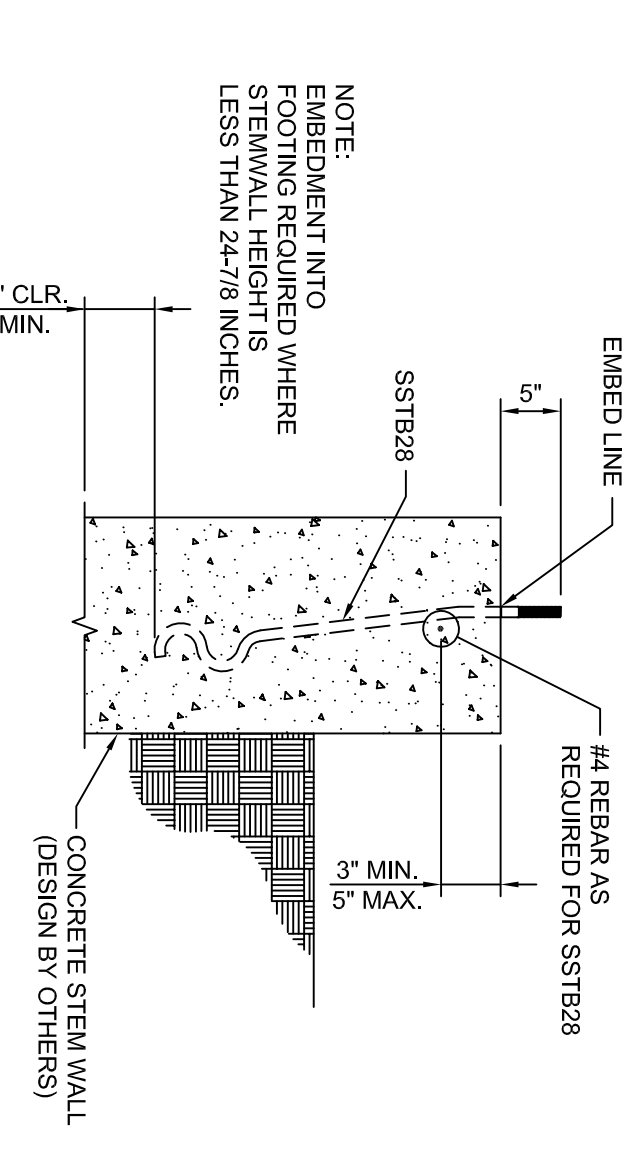
11



ANCHORAGE SCHEDULE

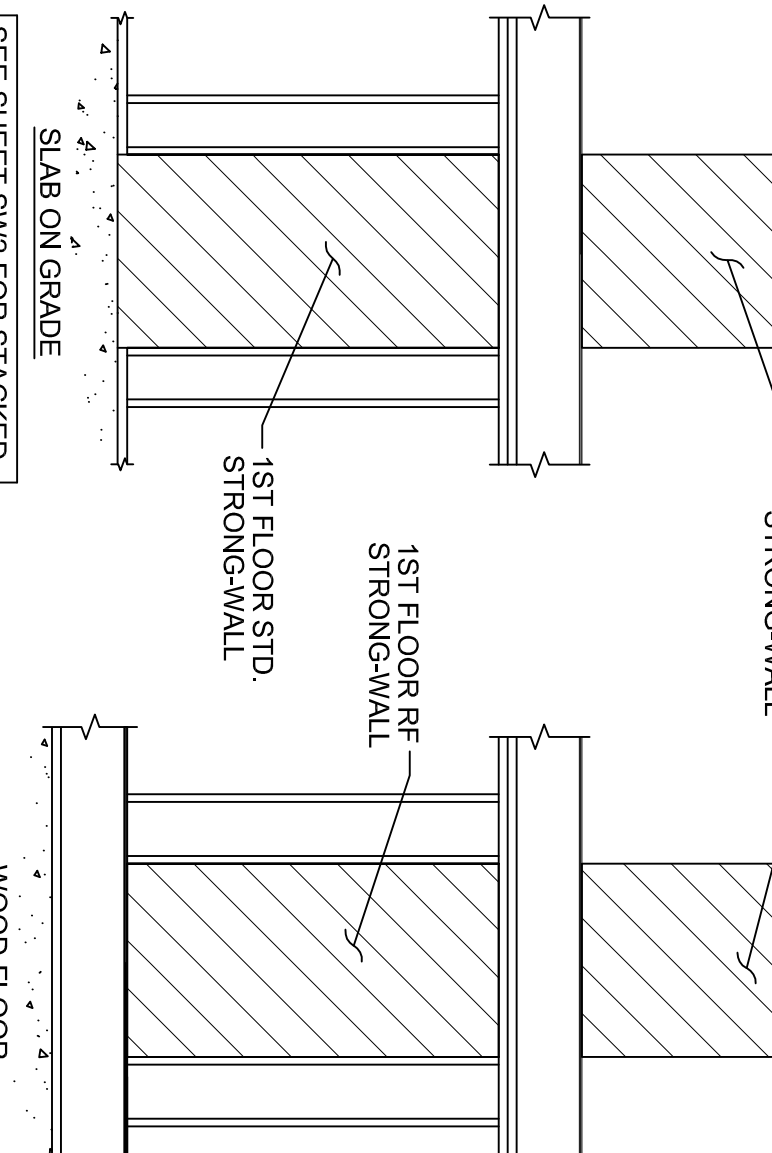
SEE SHEET SW2 FOR STACKED STRONG-WALL REQUIREMENTS.

SSTB ANCHOR BOLTS ARE NOT CURRENTLY CODE LISTED. SEE DETAILS 1-SW1 AND 2-SW1 FOR SWAB7/8 CODE LISTED ANCHORAGE SOLUTIONS. REFER TO THE INSTALLATION AND REBAR LENGTH REQUIREMENTS.



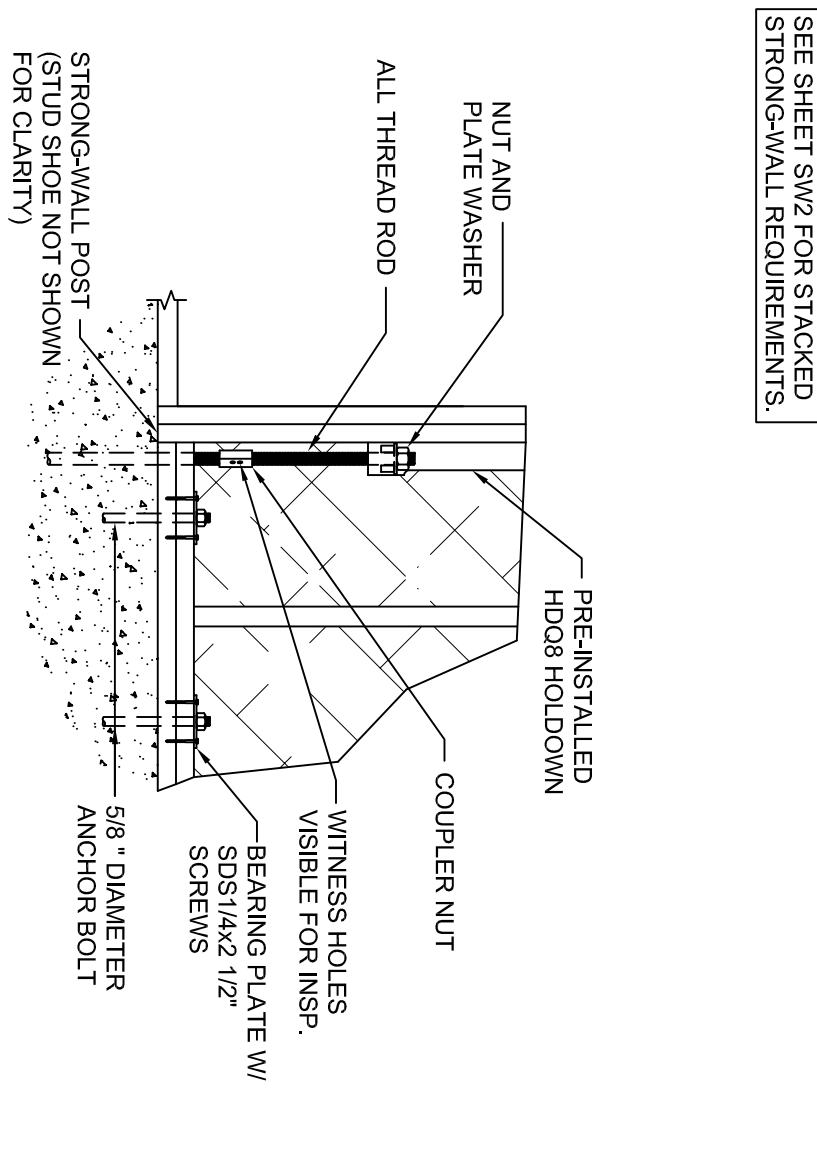
SSTB ANCHORAGE (CONC. STEW WALL)

10



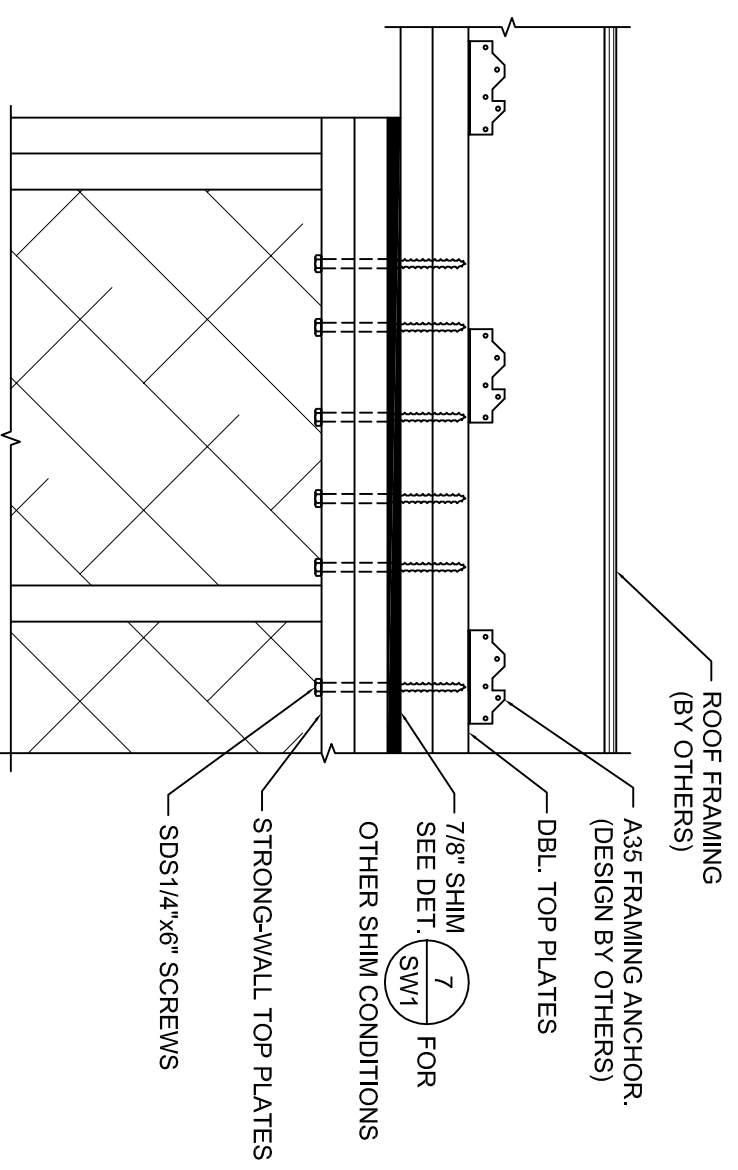
STACKED STRONG-WALL®

12



STANDARD WALL SILL

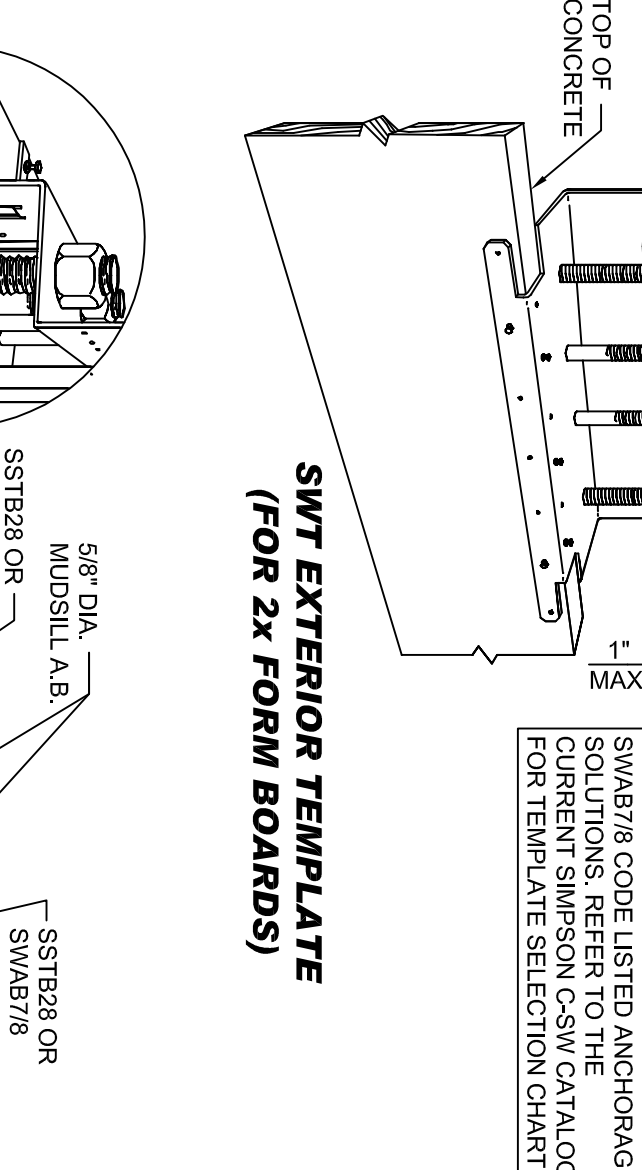
3



TOP PLATE CONNECTION

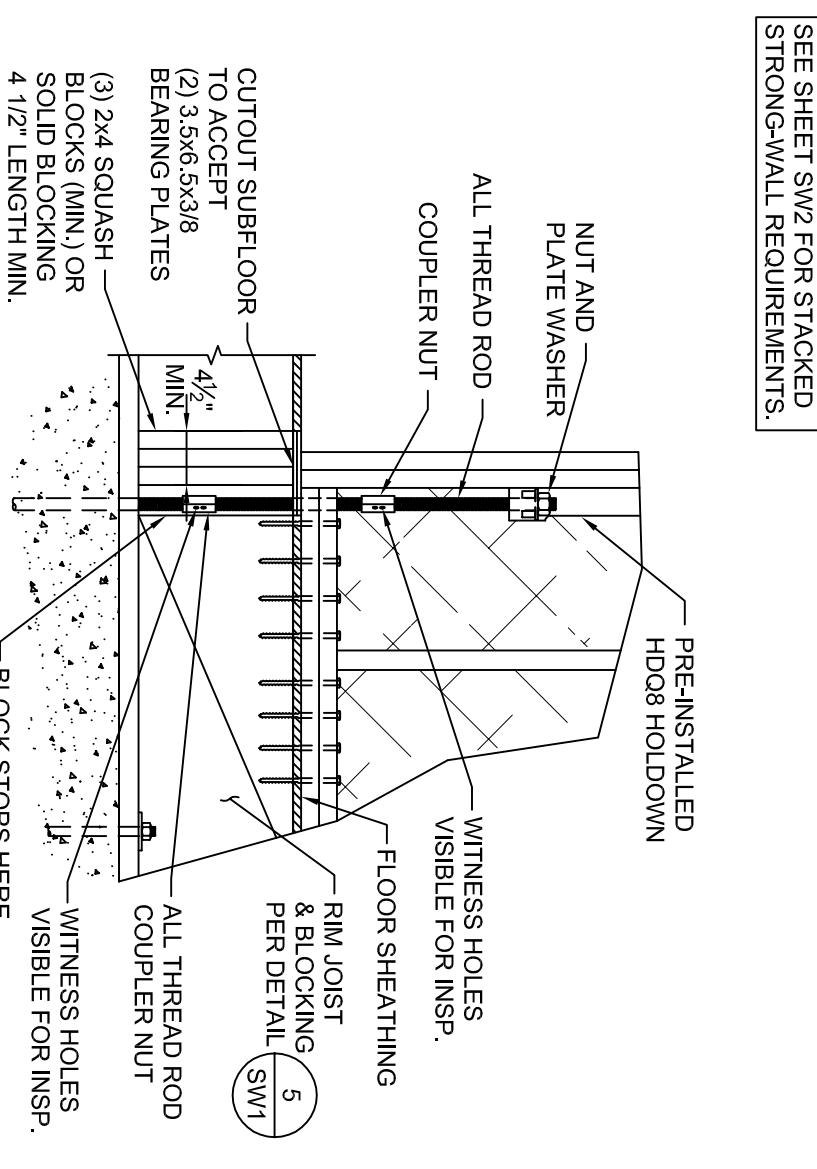
SEE SHEET SW2 FOR STACKED STRONG-WALL REQUIREMENTS.

SSTB ANCHOR BOLTS ARE NOT CURRENTLY CODE LISTED. SEE DETAILS 1-SW1 AND 2-SW1 FOR SWAB7/8 CODE LISTED ANCHORAGE SOLUTIONS. REFER TO THE INSTALLATION AND REBAR LENGTH REQUIREMENTS.



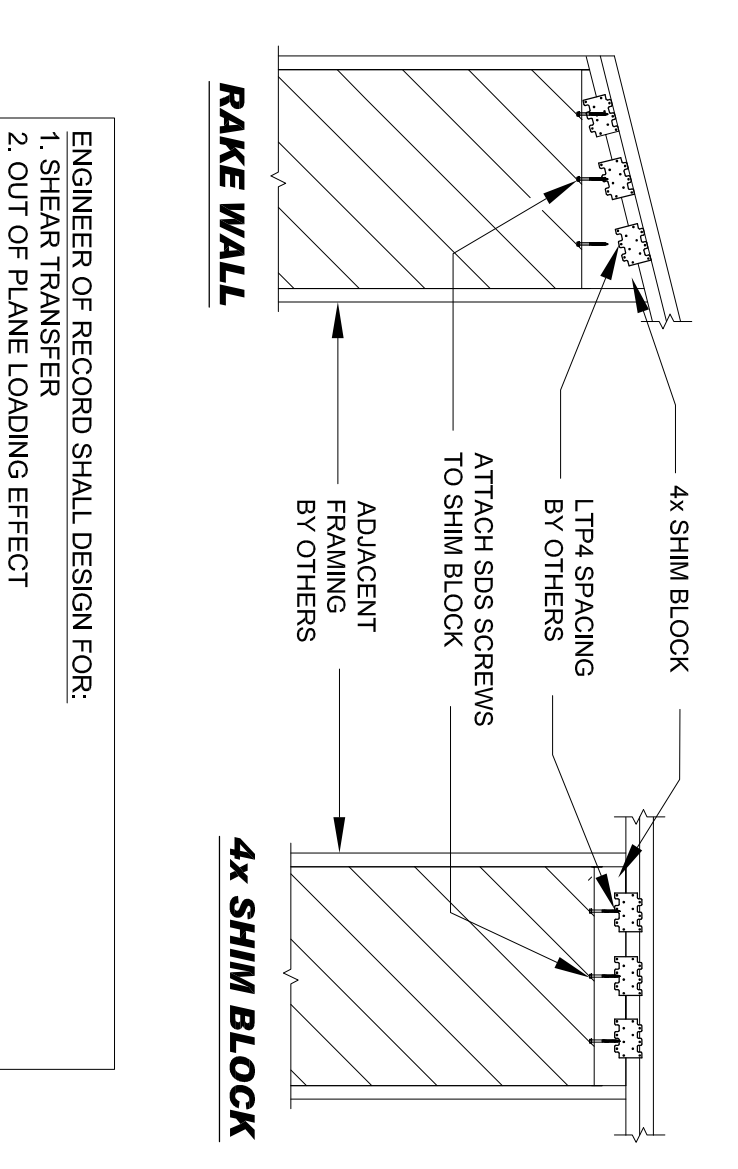
STRONG-WALL® TEMPLATES

13



RAISED FLOOR WALL SILL

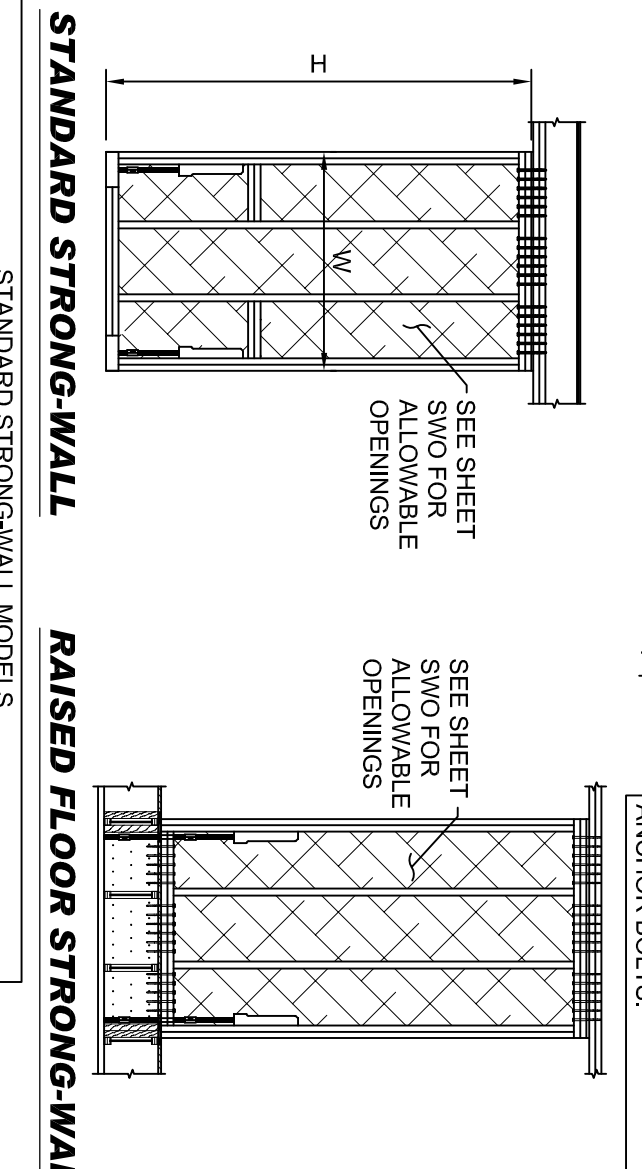
4



SHIM BLOCK ON STD. & RF WALLS

SEE SHEET SW2 FOR STACKED STRONG-WALL REQUIREMENTS.

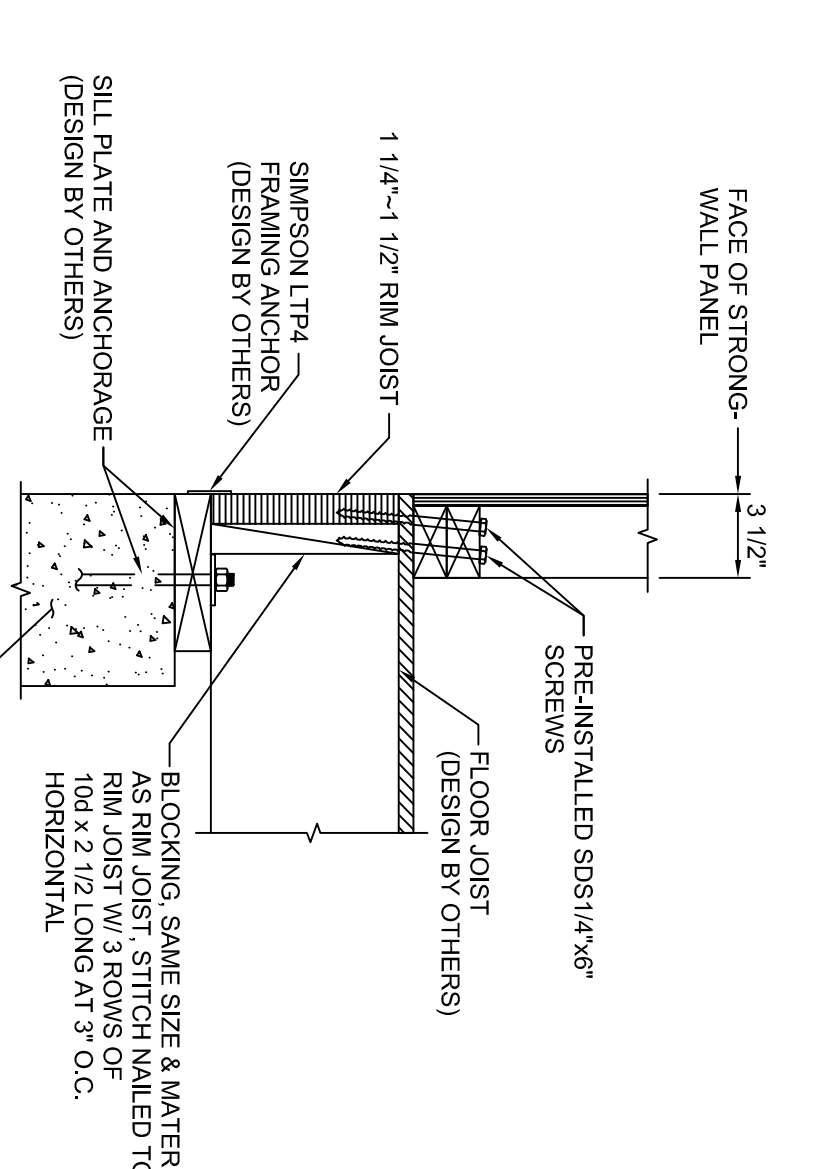
SSTB ANCHOR BOLTS ARE NOT CURRENTLY CODE LISTED. SEE DETAILS 1-SW1 AND 2-SW1 FOR SWAB7/8 CODE LISTED ANCHORAGE SOLUTIONS. REFER TO THE INSTALLATION AND REBAR LENGTH REQUIREMENTS.



WALL SPECIFICATIONS

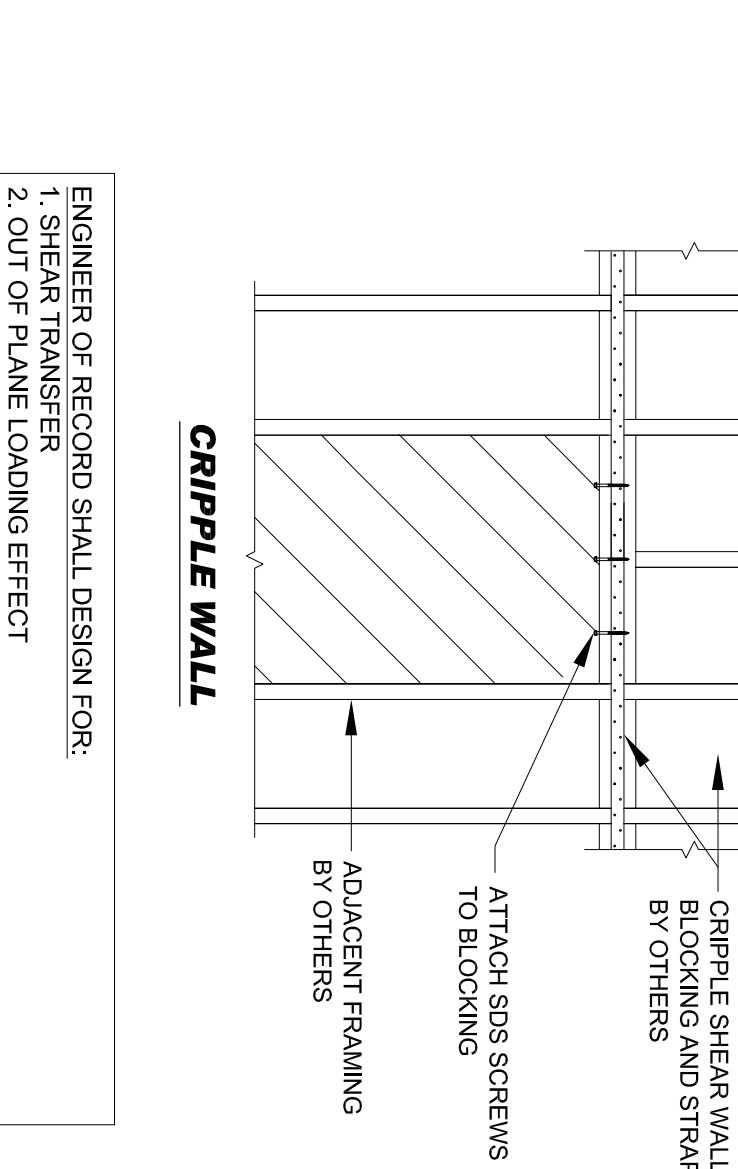
14

MODEL SET UP	W (ft)	H (ft)	T (ft)	RAISED FLOOR STRONG-WALL MODELS		ASSEMBLED WEIGHT (lbs)
				NUMBER OF FASTENERS IN BOTTOM OF WALL	NUMBER OF FASTENERS IN TOP OF WALL	
SW18x86	18	93.14	3.12	13,505	14,46	85
SW24x86	24	93.14	3.12	16,505	14,46	91
SW30x86	30	93.14	3.12	20,505	14,46	116
SW36x86	36	93.14	3.12	24,505	14,46	149
SW42x86	42	93.14	3.12	28,505	14,46	182
SW48x86	48	93.14	3.12	32,505	14,46	215
SW54x86	54	93.14	3.12	36,505	14,46	248
SW60x86	60	93.14	3.12	40,505	14,46	281
SW66x86	66	93.14	3.12	44,505	14,46	314
SW72x86	72	93.14	3.12	48,505	14,46	347
SW78x86	78	93.14	3.12	52,505	14,46	380
SW84x86	84	93.14	3.12	56,505	14,46	413
SW90x86	90	93.14	3.12	60,505	14,46	446
SW96x86	96	93.14	3.12	64,505	14,46	479
SW102x86	102	93.14	3.12	68,505	14,46	512
SW108x86	108	93.14	3.12	72,505	14,46	545
SW114x86	114	93.14	3.12	76,505	14,46	578
SW120x86	120	93.14	3.12	80,505	14,46	611
SW126x86	126	93.14	3.12	84,505	14,46	644
SW132x86	132	93.14	3.12	88,505	14,46	677
SW138x86	138	93.14	3.12	92,505	14,46	710
SW144x86	144	93.14	3.12	96,505	14,46	743
SW150x86	150	93.14	3.12	100,505	14,46	776
SW156x86	156	93.14	3.12	104,505	14,46	809
SW162x86	162	93.14	3.12	108,505	14,46	842
SW168x86	168	93.14	3.12	112,505	14,46	875
SW174x86	174	93.14	3.12	116,505	14,46	908
SW180x86	180	93.14	3.12	120,505	14,46	941
SW186x86	186	93.14	3.12	124,505	14,46	974
SW192x86	192	93.14	3.12	128,505	14,46	1007
SW198x86	198	93.14	3.12	132,505	14,46	1040
SW204x86	204	93.14	3.12	136,505	14,46	1073
SW210x86	210	93.14	3.12	140,505	14,46	1106
SW216x86	216	93.14	3.12	144,505	14,46	1139
SW222x86	222	93.14	3.12	148,505	14,46	1172
SW228x86	228	93.14	3.12	152,505	14,46	1205
SW234x86	234	93.14	3.12	156,505	14,46	1238
SW240x86	240	93.14	3.12	160,505	14,46	1271
SW246x86	246	93.14	3.12	164,505	14,46	1304
SW252x86	252	93.14	3.12	168,505	14,46	1337
SW258x86	258	93.14	3.12	172,505	14,46	1370
SW264x86	264	93.14	3.12	176,505	14,46	1403
SW270x86	270	93.14	3.12	180,505	14,46	1436
SW276x86	276	93.14	3.12	184,505	14,46	1469
SW282x86	282	93.14	3.12	188,505	14,46	1502
SW288x86	288	93.14	3.12	192,505	14,46	1535
SW294x86	294	93.14	3.12	196,505	14,46	1568
SW300x86	300	93.14	3.12	200,505	14,46	1601
SW306x86	306	93.14	3.12	204,505	14,46	1634
SW312x86	312	93.14	3.12	208,505	14,46	1667
SW318x86	318	93.14	3.12	212,505	14,46	1700
SW324x86	324	93.14	3.12	216,505	14,46	1733
SW330x86	330	93.14	3.12	220,505	14,46	1766
SW336x86	336	93.14	3.12	224,505	14,46	1799
SW342x86	342	93.14	3.12	228,505	14,46	1832
SW348x86	348	93.14	3.12	232,505	14,46	1865
SW354x86	354	93.14	3.12	236,505	14,46	1898
SW360x86	360	93.14	3.12	240,505	14,46	1931
SW366x86	366	93.14	3.12	244,505	14,46	1964
SW372x86	372	93.14	3.12	248,505	14,46	1997
SW378x86	378	93.14	3.12	252,505	14,46	2030
SW384x86	384	93.14	3.12	256,505	14,46	2063



RAISED FLOOR WALL SECTION

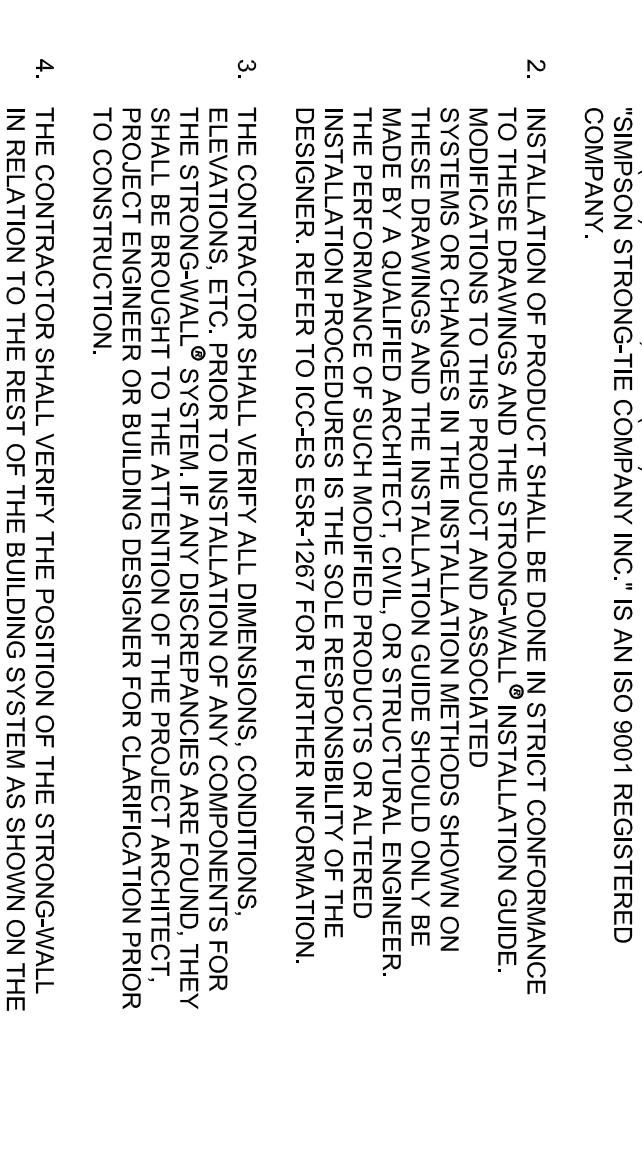
5



CRIPPLE WALL ON STD & RF WALLS

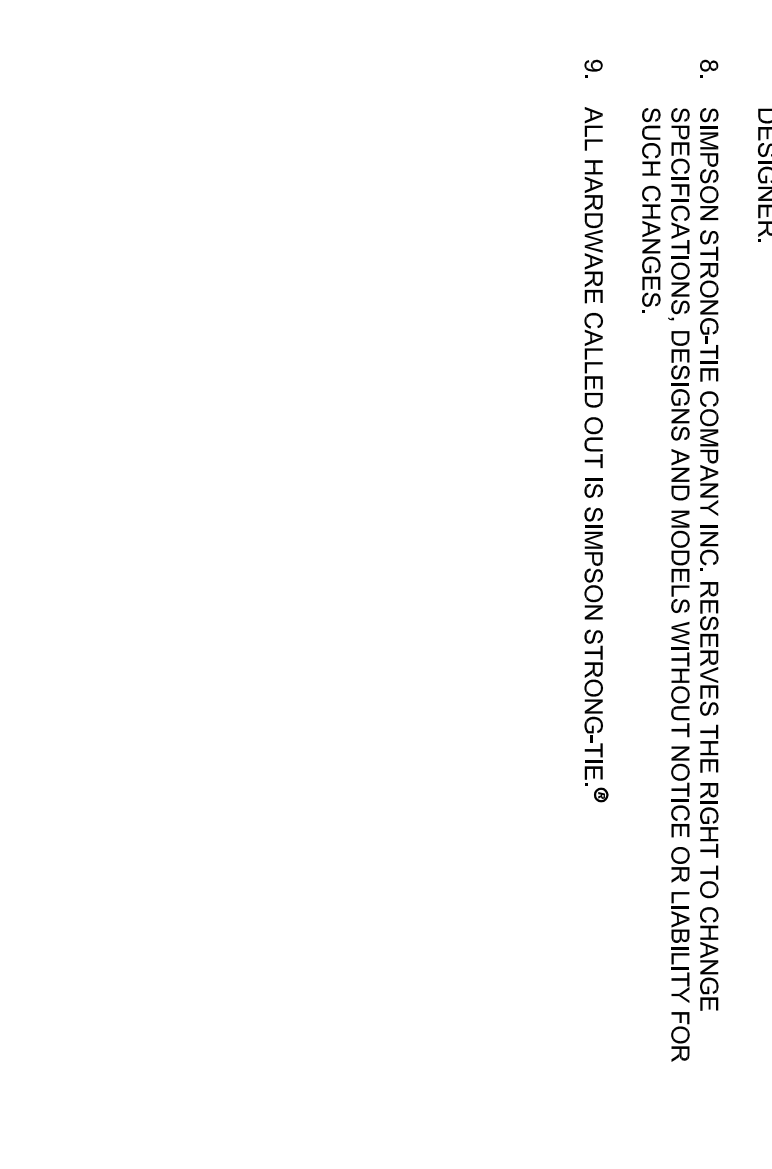
SEE SHEET SW2 FOR STACKED STRONG-WALL REQUIREMENTS.

SSTB ANCHOR BOLTS ARE NOT CURRENTLY CODE LISTED. SEE DETAILS 1-SW1 AND 2-SW1 FOR SWAB7/8 CODE LISTED ANCHORAGE SOLUTIONS. REFER TO THE INSTALLATION AND REBAR LENGTH REQUIREMENTS.



STRONG-WALL® TEMPLATES

13



SINGLE STORY STRONG-WALL®

11

NO.	DATE	REVISIONS
1	07/01/03	LINE TYPES REVISED
2	04/09/07	GENERAL REVISIONS
3	09/23/07	GENERAL REVISIONS
4	08/29/08	ESR-1267 REVISIONS

NAME	DATE
8-29-2008	

SIMPSON Strong-Tie
SIMPSON STRONG-TIE COMPANY INC.
HOME OFFICE: 5956 W. LAS POSITAS BLVD., PLEASANTON, CA 94588
Tel: (800) 999-5099 Fax: (925) 675-0826

STRONG-WALL®
SINGLE STORY WALLS
THERE IS NO EQUAL

SW1
SHEETS