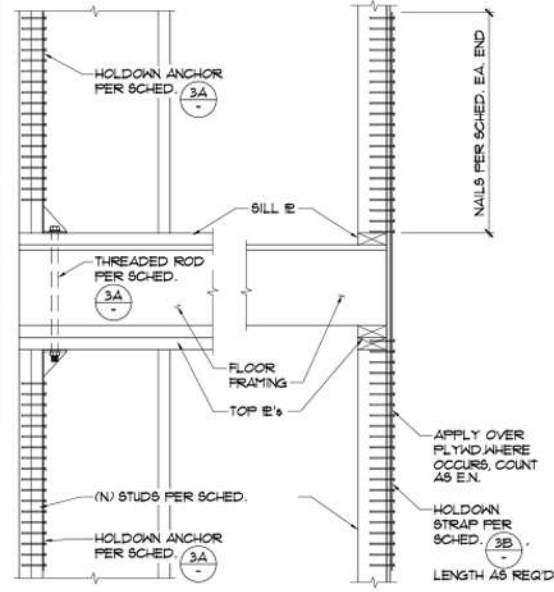


**STRAP SCHEDULE:
OPTIONS FOR FLOOR TO FLOOR HOLDOWN**

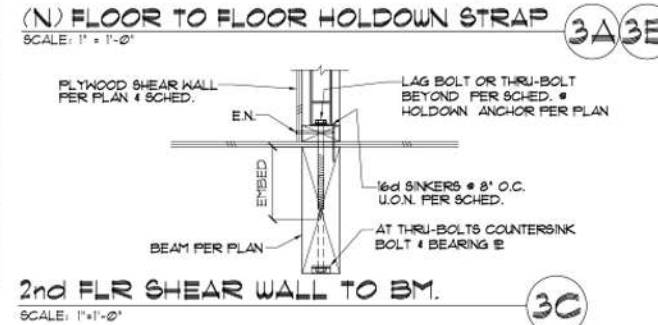
MARK	STRAP	NAILS EA. END, OR STUD BOLTS	THRU-BOLT PER (3A) (3B)	BOLT TO BM PER (3C) *	MIN. STUD SIZE	CAPACITY (#)
A	LTT19	8 - 10d	1/2" DIA	5/8" DIA LAG x 3" MIN EMBED	(2) 2x	1340
B	LTT20B	10 - 10d	1/2" DIA	5/8" DIA LAG x 3" MIN EMBED	(2) 2x	1500
C	HTT4	(18) - 10d x 1 1/2"	5/8" DIA	5/8" DIA LAG x 6" MIN EMBED	(2) 2x	3610
D	HTT5	26 - 10d	5/8" DIA	5/8" DIA THRU-BOLT W/ 4" SQ x 1/2" BRG IE	3x	4670
E	HDU8	(20) - SD5 1/4x 2 1/2"	7/8" DIA	7/8" DIA THRU-BOLT W/ 4" SQ x 1/2" BRG IE	4x	6970
F	HDUI	(30) - SD5 1/4x 2 1/2"	7/8" DIA	7/8" DIA THRU-BOLT W/ 5" SQ x 1/2" BRG IE	6x	9535
G	HDUI4	(36) - SD5 1/4x 2 1/2"	1" DIA	1" DIA THRU-BOLT W/ 5" SQ x 1/2" BRG IE	6x	14445

* WHERE HOLDOWN LANDS ON BEAM BELOW, LAG BOLT TO BEAM PER (3C)



**STRAP SCHEDULE:
FLOOR TO FLOOR HOLDOWN (VERTICAL)
OR WINDOW STRAP (HORIZONTAL)**

MARK	STRAP	NAILS EA. END	SPACING *	STUD SIZE OR BLK.	CAPACITY (#)
A	CS18	(8) - 10d	2 ROWS 1 1/2" O.C.	(1) - 2x	1370
B	CS16	(9) - 10d	2 ROWS 1 1/2" O.C.	(1) - 2x	1535
C	CMST14	(19) - 10d	2 ROWS 1 1/2" O.C.	(2) - 2x	3131
D	CMST14	(24) - 10d	2 ROWS 1 1/2" O.C.	(2) - 2x	4120
E	CMST12	(33) - 10d	2 ROWS 1 1/2" O.C.	(2) - 2x	6970
F	CMST12	(37) - 16d	2 ROWS 1 1/2" O.C.	(2) - 2x	9215



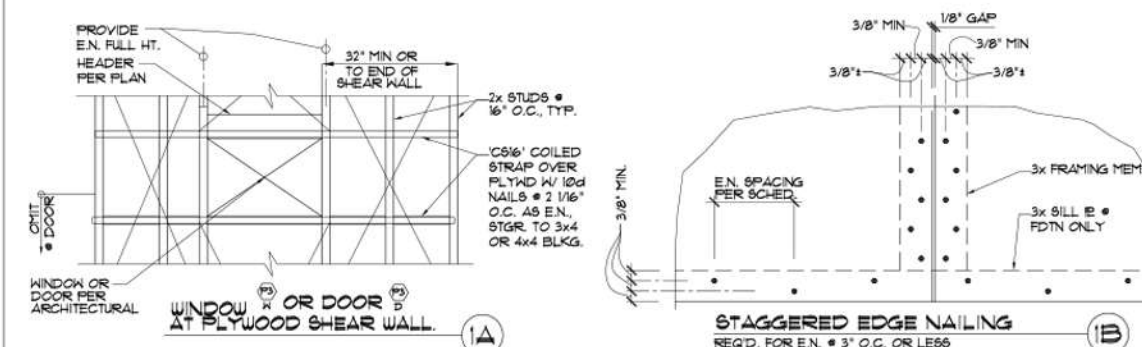
* STRAP NAILS APPLIED OVER PLYND. COUNT TOWARDS REQD. SHEAR WALL EDGE NAILING. 16d SINKERS MAY BE USED IN LIEU OF 10d COMMONS.

(N) FLOOR TO FLOOR HOLDOWN STRAP — CHOOSE STRAP FROM (3A) OR (3B)
* NOTE: ALL REFERENCED WOOD CONNECTORS TO BE 'SIMPSON' PER WOOD/LUMBER NOTE 13 ON SHT SI.

PLY NAILING SCHED. (1) MAXIMUM SPACING FOR SHEAR TRANSFER CONNECTIONS

MARK (CAPACITY POUNDS PER LINEAR FT.)	# STRUCT I PLY. THK.	# NAILS	EDGE NAIL SPACING (1) (2)	BOTTOM OF WALL (INCHES ON CENTER)			TOP OF WALL (INCHES ON CENTER)		FOUNDATION (7) (INCHES ON CENTER)
				16d SINKERS	16d COMMONS	1/4" LAG SCREWS (3)	'A35' OR 'LTP5' ANCHORS	'A34' ANCHORS	
P6 (280 PLF)	3/8"	8d COFFEN	6" O.C.	5 1/2	6	8 1/2	19	14	48
P4 (430 PLF)	3/8"	8d COFFEN	4" O.C.	3 1/2	4	5 1/2	12	9	30
P4 EA SIDE (860 PLF)	3/8"	8d COFFEN	4" O.C.	-	-	-	6	9	16
P3 (415 PLF)	3/8"	8d COFFEN	3" O.C.	3	3	4 1/2	10	7	24
P25 (415 PLF)	3/8"	8d COFFEN	2 1/2" O.C.	2 1/2	2 1/2	3 1/2	8	6	20
*P2 (415 PLF)	3/8"	8d COFFEN	2" O.C.	2	2 1/4	3	7	5	16

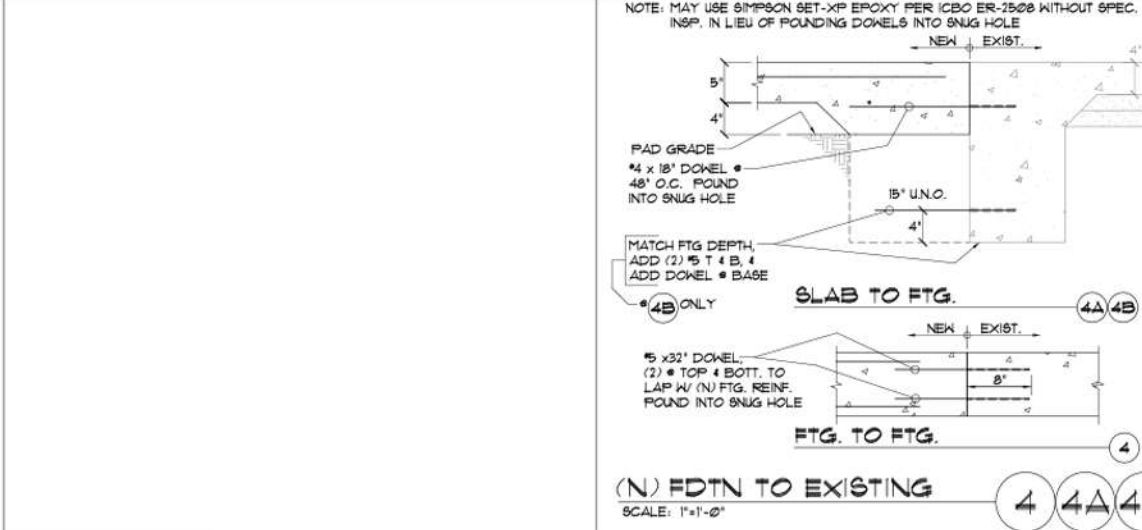
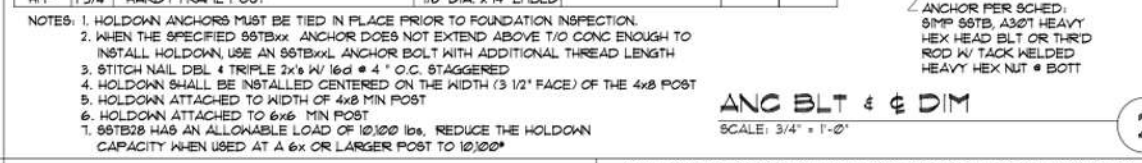
- (1) EDGE NAILING TO OCCUR AT TOP PLATE, SILL PLATE, END STUDS OR POST, & EACH SIDE OF ALL PANEL JOINTS. SEE (2) (8)
- (2) FIELD NAILING TO OCCUR AT ALL STUDS & 12" O.C. MAXIMUM.
- (3) 3" EMBEDMENT REQUIRED INTO BASE MEMBER.
- (4) EDGE NAILING SHALL BE STAGGERED PER (8).
- (5) 3x SILL PLATES REQUIRED AT FOUNDATION AND 3x MEMBERS REQUIRED AT ALL ADJOINING PLYWOOD PANEL EDGES EXCEPT (8).
- (6) MIN. NOMINAL SILL BOLT DIA. = 5/8" MIN. DIST. FROM END OF SILL PLATE = 4-3/8" MAX. DIST. FROM END OF SILL PLATE = 12" ALL SILL BOLTS SHALL HAVE 3" x 3" x 1/4" THK. PLATE WASHERS. (PLATE WASHERS MAY HAVE A 3/16" x 1-3/4" DIAGONALLY SLOTTED HOLE WITH A STANDARD WASHER BETWEEN PLATE WASHER AND NUT.)
- (7) FASTENERS IN CONTACT WITH PRESSURE TREATED WOOD SHALL BE GALVANIZED, STAINLESS STEEL OR SILICON BRONZE.
- * USE 1/2" STR 1 PLYWOOD W/ 10d EN.



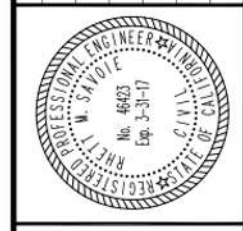
WINDOW OR DOOR AT PLYWOOD SHEAR WALL (1A)
STAGGERED EDGE NAILING (1B)
REQD. FOR EN. & 3" O.C. OR LESS (1B)
PLYWOOD SHEAR WALL SCHEDULE (1)

HOLDOWN ANCHOR SCHEDULE

MARK	F	HOLD-DOWN ANCHOR	REQD. END STUD	CONNECTION TO STUD	ANCHORS IN CONCRETE				ALLOW UPLFT (POUNDS)	EPOXY EMBED
					THRD D RODS # (X)	ANCHOR TYPE	EMBED LENGTH	ANCHOR TYPE		
H2	1 1/4"	HDU2	2 - 2x	6-SD5 1/4x2 1/2 WS	5/8" DIA. 56TB6	8"	5/8" DIA. 56TB6	11"	3075	10 1/2"
H4	1 1/4"	HDU4	2 - 2x	10-SD5 1/4x2 1/2 WS	5/8" DIA. 56TB10	8"	5/8" DIA. 56TB10	16 5/8"	4565	
H5	1 1/4"	HDU5	2 - 2x	14-SD5 1/4x2 1/2 WS	5/8" DIA. 56TB14	8"	5/8" DIA. 56TB14	20 5/8"	5175	10 1/2"
H8	1 1/4"	HDU8	3 - 2x	20-SD5 1/4x2 1/2 WS	7/8" DIA. 56TB20	14"	7/8" DIA. 56TB20	24 5/8"	7810	16"
H11	1 1/4"	HDUI	4x5 OR 6x6	30-SD5 1/4x2 1/2 WS	1" DIA. 56TB30	24 5/8"	1" DIA. 56TB30	24 5/8"	9535	11 7/8"
H14	1 9/16"	HDUI4	4x5 OR 6x6	36-SD5 1/4x2 1/2 WS	1" DIA. 56TB36	24 5/8"	1" DIA. 56TB36	24 5/8"	14,350*	20"
HFF	1 3/4"	PER HARDY FRAME MANUF. STD. STRENGTH HPX-24 4 B			1 1/8" DIA. x 14" EMBED					
HF	1 3/4"	PER HARDY FRAME MANUF. STD. STRENGTH #1F24, #F32 & #F48			7/8" DIA. x 14" EMBED					
HFP	1 3/4"	HARDY FRAME POST			7/8" DIA. x 14" EMBED					



Revisions:



DUNN SAVOIE INC.
Structural Engineering
908 S. Cleveland St.
Oceanside, CA, 92054
Phone (760) 966-6356
Fax (760) 966-6350

Project Name:
AGUILAR ROOM ADDITION

Owner:

Designer:
MAR-Co.
HOUSE PLANS & DESIGNS
PLANS-DRAFTING-DESIGNS-3D-BUILDING PERMITS
MARGO A. LAUREANO
WWW.MARCOHOUSEPLANS.COM
760-805-2358
706-941-2678
LICENSE: 18964
WWW.MARCOHOUSEPLANS.COM

Job No: 16-235
date drawn: DEC.2016
date issued: JAN.25.2017
project engineer: AK
drawn by: RJB
checked by: RPS
scale: AS NOTED

drawing status:
 INFO FOR CONSTRUCTION
 INFORMATION DWGS.
 PRELIMINARY DWGS.
 DESIGN DEVELOPMENT DWGS.
 CHECK SET
 PROGRESS DRAWINGS
 PLAN CHECK DRAWINGS
 BID SET DRAWINGS
 CONSTRUCTION DOCUMENTS
 OTHER

DUNN SAVOIE INC. EXPRESSLY RESERVES ITS COMMON LAW AND OTHER PROPERTY RIGHTS IN THIS DOCUMENT. THIS DOCUMENT SHALL NOT BE REPRODUCED, COPIED, CHANGED OR DISCLOSED IN ANY FORM OR MANNER, WHATSOEVER, WITHOUT THE WRITTEN CONSENT OF DUNN SAVOIE INC.

sheet title:
SHEAR WALL & HOLDOWN SCHEDULES & FOUNDATION DETAILS

sheet no:
S-3